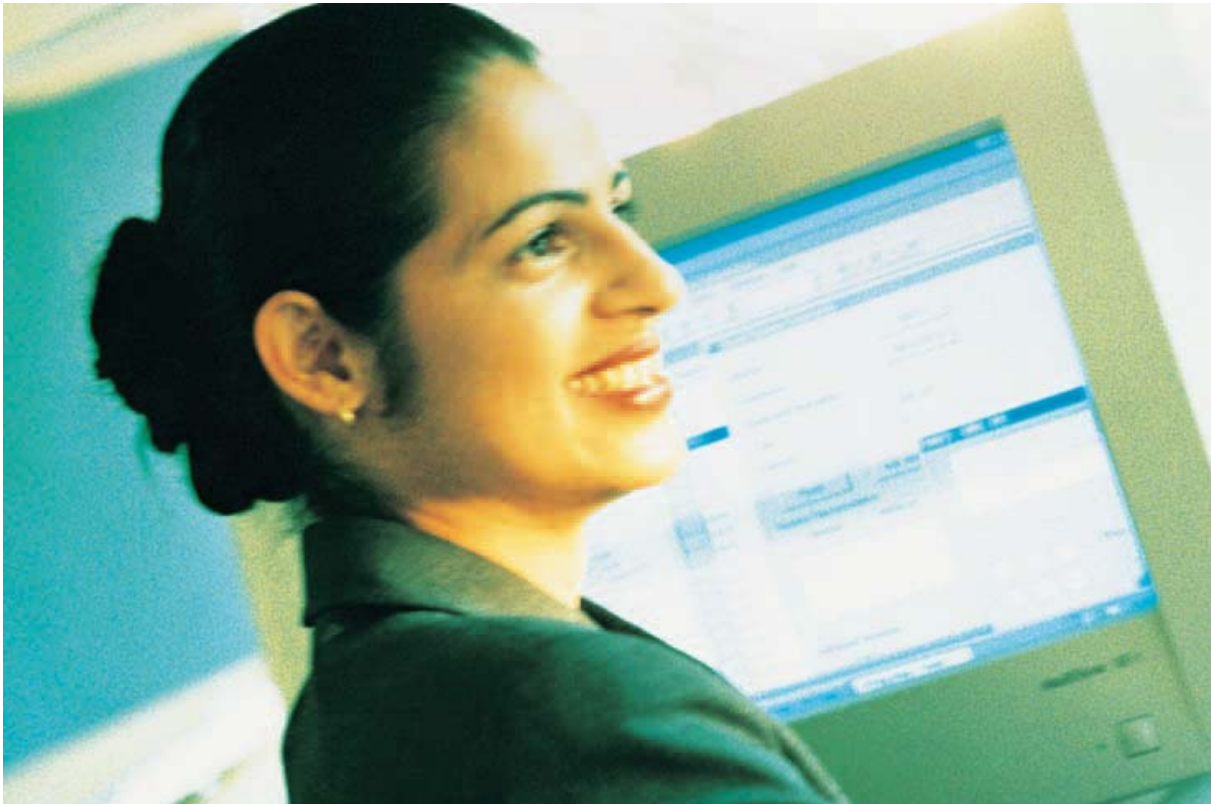


## D.N.A. Server 5.1



- Enables unique Directory configurations for each customer
- Flexible configurations possible from single PC installations to multiple servers over LAN/WAN, supporting multiple clients
- Based on Microsoft Windows NT or Windows 2000
- Uses Microsoft SQL Server or MSDE database
- Shared management databases
- Uses de facto and industry standards for communication within and outside D.N.A. environments

At the heart of a D.N.A. network, the D.N.A. Server provides services, applications, a common data storage medium, and communications interface handler for all D.N.A. applications. It is based on the Windows NT or Windows 2000 server and utilizes the Microsoft SQL Server database. A set of common utilities including logon/security, site set-up, and installation are provided to complement the basic database services. Multiple D.N.A. Servers can be connected within a network to allow customers to maintain multiple D.N.A. installations.

Management databases are built up by co-installing a D.N.A. Server with a Microsoft SQL Server. It can serve as a 'stand-alone' server or co-reside with other applications such as D.N.A. Directory Manager and D.N.A. Operator Workstation. Each of these D.N.A. applications can either be used 'standalone' or in combination with other D.N.A. applications.

A large D.N.A. network can be built up using multiple D.N.A. Servers. In this scenario, each server provides services to a defined subset of nodes within the network. A client application is then able to select one of the servers at logon and manage the associated nodes, depending on authority level. This distributed architecture enables network traffic and response times to be optimized, of particular importance for large national and international networks.

D.N.A. Server contains flexible processes and routines that facilitates inter-application communication. It also provides the capability for external applications to integrate with a D.N.A. system.

## Features

### Services provided by D.N.A. Server

- Common database services available to integrated D.N.A. applications
- Common security and user access services to configure individual users of D.N.A. applications
- Connectivity between multiple D.N.A. Servers
- Dial-up client connections via remote access service
- Simplified database access (ODBC) for third-party report generators
- Multiple, simultaneous application connection to MD110
- Re-configuration of managed MD110 nodes by adding new nodes
- License viewer

### The following can be configured by D.N.A. Server:

- Directory
- Trunk
- Time system interface
- Voice system interface
- Message and diversion
- Tenant group
- Name identity conversion
- MD110 connectivity
- User Name and Privelege

## Technical information

### Hardware/Software

Since each D.N.A. configuration has different storage and processing requirements, the following is a general guideline for D.N.A. Servers:

- Pentium III 600 MHz
- 128 MB RAM
- 2 GB HDD
- 800x600 monitor and video card resolution
- LAN network card
- TCP/IP network protocol
- Microsoft Windows NT 4.0 server or Microsoft Windows 2000 server
- Microsoft SQL Server 7.0, 2000 or MSDE
- Microsoft Excel 2000 or 2002 (for Performance Presentation Manager to run on the D.N.A. server)

### Communication

D.N.A. Server connects to D.N.A. application clients via LAN or dial-up RAS connection.

- Connection to MD110 is achieved via the MD110 O&M interface (Ethernet or V.24)

### Compatibility

D.N.A. Server 5.1 is compatible with Extension Manager 12.0, Performance Manager 5.1, Directory Manager 5.1, Operator Workstation 5.1 and MD110 software release BC10, BC11 and BC12.

The D.N.A. Server is required when installing any of the D.N.A. applications

### Asia Pacific

Ericsson Enterprise  
3420 Persiaran Sepang  
63000 Cyberjaya  
Selangor Darul Ehsan  
Malaysia  
Phone: +60 3 8314 6000  
[enterprise.asiapacific@ericsson.com](mailto:enterprise.asiapacific@ericsson.com)

### Americas

Ericsson Enterprise  
6300 Legacy Drive  
Plano, TX 75024  
USA  
[enterprise.americas@ericsson.com](mailto:enterprise.americas@ericsson.com)

### Europe, Middle East, Africa

Ericsson Enterprise  
Avenue du Bourget 44 Bourgetlaan  
B-1130 Brussels  
BELGIUM  
Phone: +32 2 745 12 11  
[enterprise.europe@ericsson.com](mailto:enterprise.europe@ericsson.com)

### Nordic

Ericsson Enterprise  
LM Ericssons väg 8  
126 25 Stockholm  
SWEDEN  
Phone: +46 8 579 18 000  
[enterprise.nordic@ericsson.com](mailto:enterprise.nordic@ericsson.com)